

The NEAX[®] 2400 IPX

The Promise Fulfilled



Empowered by Innovation

NEC

Technology that helps you work smarter, not harder.

Today's technology offers great potential.

The NEAX 2400 IPX is the promise fulfilled.

Take advantage of all the benefits of peer-to-peer IP Telephony for your enterprise with the NEAX 2400 IPX (Internet Protocol Exchange) while enjoying the many hundreds of PBX features you've come to expect from NEC.

What is Peer-to-Peer Switching?

"Peer-to-peer" switching means that the stations participating in a call are connected directly to each other through the IP network. The voice signals travel through the IP network but do not "go through" the switch as they do in traditional telephony. The fact that the NEAX 2400 IPX can function in and support a "hybrid" network with traditional digital/analog switching, IP/TDM/IP switching and pure peer-to-peer IP switching means that users can continue

to utilize their existing equipment while they phase in IP Telephony and lay the foundation for future networks.

Reduced Costs of Peer-to-Peer IP Connectivity

The NEAX 2400 IPX retains all its features while offering significant cost savings associated with peer-to-peer IP Telephony such as:

Converged WAN Infrastructures –

Pay for service and maintenance of one network rather than two. By transporting voice signals across the Wide Area Network as IP packets, users can integrate their voice traffic with their data traffic.

Converged LAN Infrastructures –

Establish voice calls across the 10/100 Ethernet Local Area Network utilizing the existing plant cabling and allowing single cable termination to the desktop.

Reduced Equipment Requirements –

Reduce the need for cards while minimizing the required plant footprint as well. In traditional TDM telephony, a single port is required for each station and each tie line connection. With IP connectivity, multiple calls are controlled through a single 10/100 Ethernet port while voice travels directly between the user telephones.

Investment Protection

Even if you're not ready to migrate to 100% IP Telephony immediately, the NEAX 2400 IPX supports traditional circuit-switched telephony (Time Division Multiplexed) on both the trunk and line sides. This simultaneous compatibility allows current users of NEAX systems to retain their existing TDM equipment (thus protecting their original investment) as they begin to make the migration to pure IP Telephony. Previous versions of the NEAX 2400 can be upgraded to the NEAX 2400 IPX easily and cost effectively.



The Promise of NEON

Migration with investment protection is the cornerstone of NEC's Enterprise Open Network (NEON). NEON embodies NEC's philosophy that drives development of complementary communication solutions for OPEN networks, delivering value-added capabilities and quality of service, while protecting investment; all without compromising the user experience.

Functions Alone or in a Network

The NEAX 2400 IPX functions as a standalone telephony system supporting both IP and traditional circuit switched connectivity. Yet it can also be networked with full feature transparency into a system with other NEC telephony devices such as the NEAX 2000 IVS² and NEAX 2000 IPS units. NEAX 2400 IPX supports node-to-node peer-to-peer connectivity.

The Bottom Line

The NEAX 2400 IPX offers the full range of PBX features while utilizing NEC's broad range of IP phone sets which have a multi-port switch built in, thereby enabling one-cable termination to the desktop. Furthermore, with NEC's migration strategy, you can switch to IP Telephony now or in the future while protecting your investment.

Shared Strengths – The Advantages of Integration

While other communications systems offer Voice over IP capability, the NEAX 2400 IPX goes a few smart steps further. Our switch not only transports voice over an Internet Protocol network, but also transmits all call signaling information, as well. We call this "Telephony over IP." As a result, your networked sites can also share the same robust features and functions available on the NEAX 2400 IPX located at your corporate headquarters. What's the bottom line? Employees across the entire enterprise benefit from the same set of communications tools — one company, shared capabilities — no matter where these users happen to be located.

Because the NEAX 2400 IPX is built with an open and standards-based architecture, compatibility and interoperability with other broadband packet-based transmission media is ensured, such as ATM and Frame Relay. From the desktop to the switch to the router to the edge, transport media can be shared, mixed and flexibly matched in any way you see fit.

NEAX 2400 IPX Features

- Full complement of over 750 traditional NEC PBX features
- Intra-nodal (LAN) and inter-nodal (WAN) peer-to-peer IP connectivity
- Upgradeable from most prior versions of NEAX 2400
- Supports legacy TDM for digital and analog telephony
- Full-featured node-to-node CCIS internet-working
- Supports full range of NEC IP telephone sets

NEAX 2400 IPX

Advantages

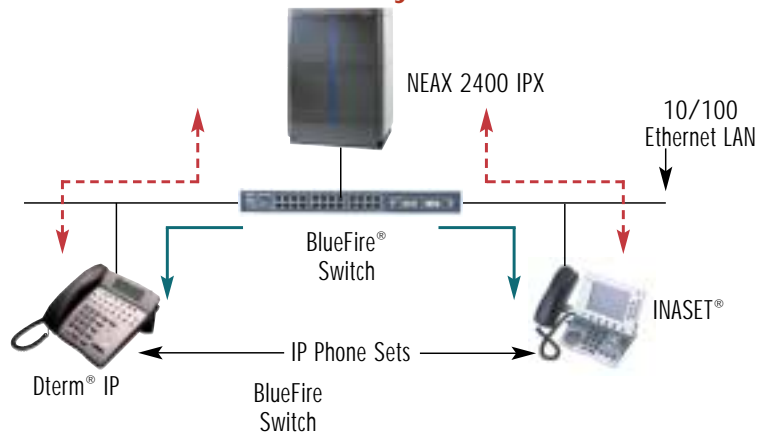
The advantages of this NEAX 2400 IPX-based system include the following significant benefits:

- Enabling personnel to increase responsiveness to customers and provide a greater impact on sales, service and revenue generation
- Enhancing business systems to improve the performance of deployed technologies
- Increasing the effectiveness of management resources
- Providing investment protection through product migration
- Networking systems through IP transport for improving communications and information throughout your company
- IP Peer to Peer Connectivity

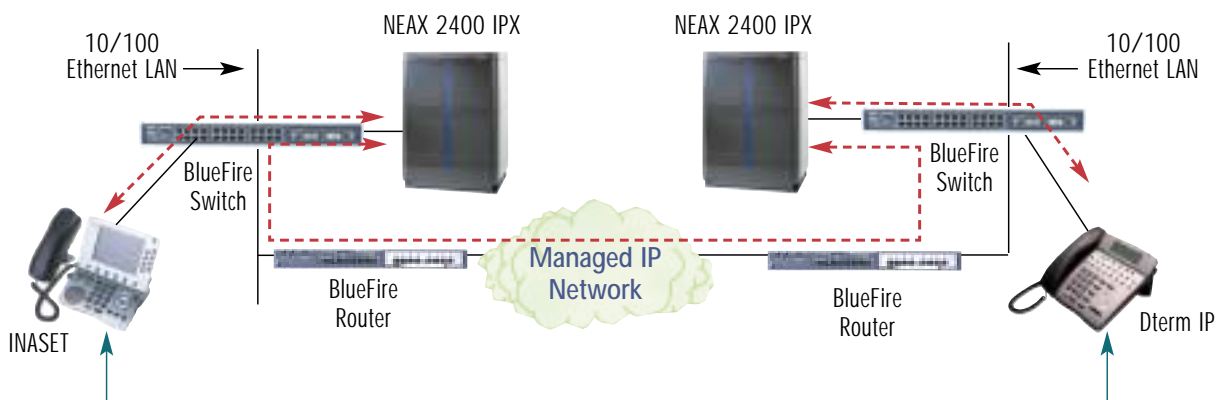
The NEAX 2400 IPX unit assists in the call setup process and provides the full range of NEAX telephony features

Once the call is established, it is "carried" only by the network. The NEAX 2400 IPX unit only "re-enters" when requested to provide a function such as conferencing in a third party

Node-to-Node Peer-to-Peer IP Connectivity In LAN



Node-to-Node Peer-to-Peer IP Connectivity Across WAN



*The NEAX 2400 IPX was designed for deployment with NEC BlueFire equipment as well as other vendors' routers and switches in an open standards environment.

©NEC America, Inc. 5/01 Rev 6/03

Corporate Networks Group
6555 N. State Hwy 161, Irving, Texas 75039

NEAX and Dterm are registered trademarks of NEC Corporation.
BlueFire and INASET are registered trademarks of NEC America, Inc.



188238

To find out more about the NEAX 2400 IPX and how NEC's powerful and versatile technology platforms can work for you, visit our website at www.cng.nec.com

Empowered by Innovation

NEC